



Fluoride Combination ISE with USB Connector- 3221/USB

The Fluoride USB ISE can be connected directly to a PC, notebook or Windows tablet without the need for a dedicated Ion meter.

The traditional BNC connector has been dispensed with and replaced with an active USB interface. When connected just select the "connectionION" icon and select from a one or two point calibration.

The connectionION software is easy to download and operate and is supplied free of charge. Calibration and logging are selectable with the option of collecting the data in csv and HTML formats. The software includes one and two point calibration and auto endpoint detection. The calibration data is displayed along with results in direct concentration units.

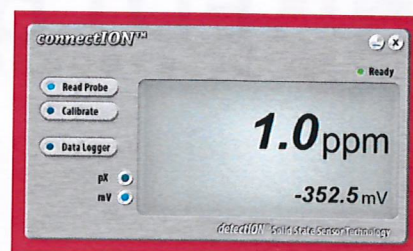
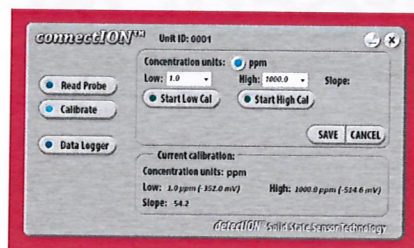
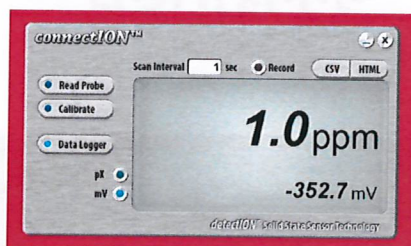
EDT direction electrodes are rugged solid state sensors with built in driTEK Teflon double junction references that do not require filling solutions, membrane replacements or operator maintenance. These combination ISEs can be stored dry and are submersible and waterproof. The solid state sensor and maintenance free reference makes these electrodes ideal for both laboratory and field work. The Epoxy tubular body provides complete protection to the electrode which allows these sensors to be used in field applications by unskilled operators.

The solid state sensors have a huge advantage over conventional ISEs in that there is no internal fill solution to degenerate the sensor this means that EDT direction combination ISEs have an unrivalled lifetime and a very low cost of ownership.

EDT are a UK based manufacturer and produce ISEs for many prominent companies in the water testing sector. As a result our ISEs are very competitively priced and come complete with technical support provided from our vast library of applications and our in house electrochemistry technicians.

For optimum results use EDT direction standards and Ionic Strength Adjustment Buffers (ISABs). Learn more about the principles of ISE measurement in our technical support area.

SPECIFICATION TABLE



Cable Length	1000mm
Cap Diameter	16mm
Concentration Range	0.02-1900 ppm
Connector	USB
Diameter	12mm
Endpoint Time	Typically 10-60 seconds
Interferences	Hydroxide
Length	155mm
pH Range	4-8 pH
Potential Drift	2mV per Day
Reference Type	Built in Ag/AgCl reference.
Resistance at 25 °C	< 2.5 MOhm
Temperature Range	5-50 Degrees °C

For more information on this product visit www.edt.co.uk/3221/USB



Fluoride Standard Solution
1000ppm (500ml)



Windows Laptop/PC or Tablet



connectION Software. Free



Telephone +44 (0)1304 829960
Unit 5 - Waldershare Park, Dover CT15 5DQ
www.edt.co.uk

